

Building Green Culture on Campus



A flock of geese is shown in flight against a clear, light blue sky. The geese are arranged in a loose V-formation, with some leading and others following. Their wings are spread, and their bodies are angled forward, suggesting they are in the middle of a long flight. The geese have grey and white feathers, with a distinctive red beak and webbed feet. The overall scene is peaceful and evokes a sense of direction and purpose.

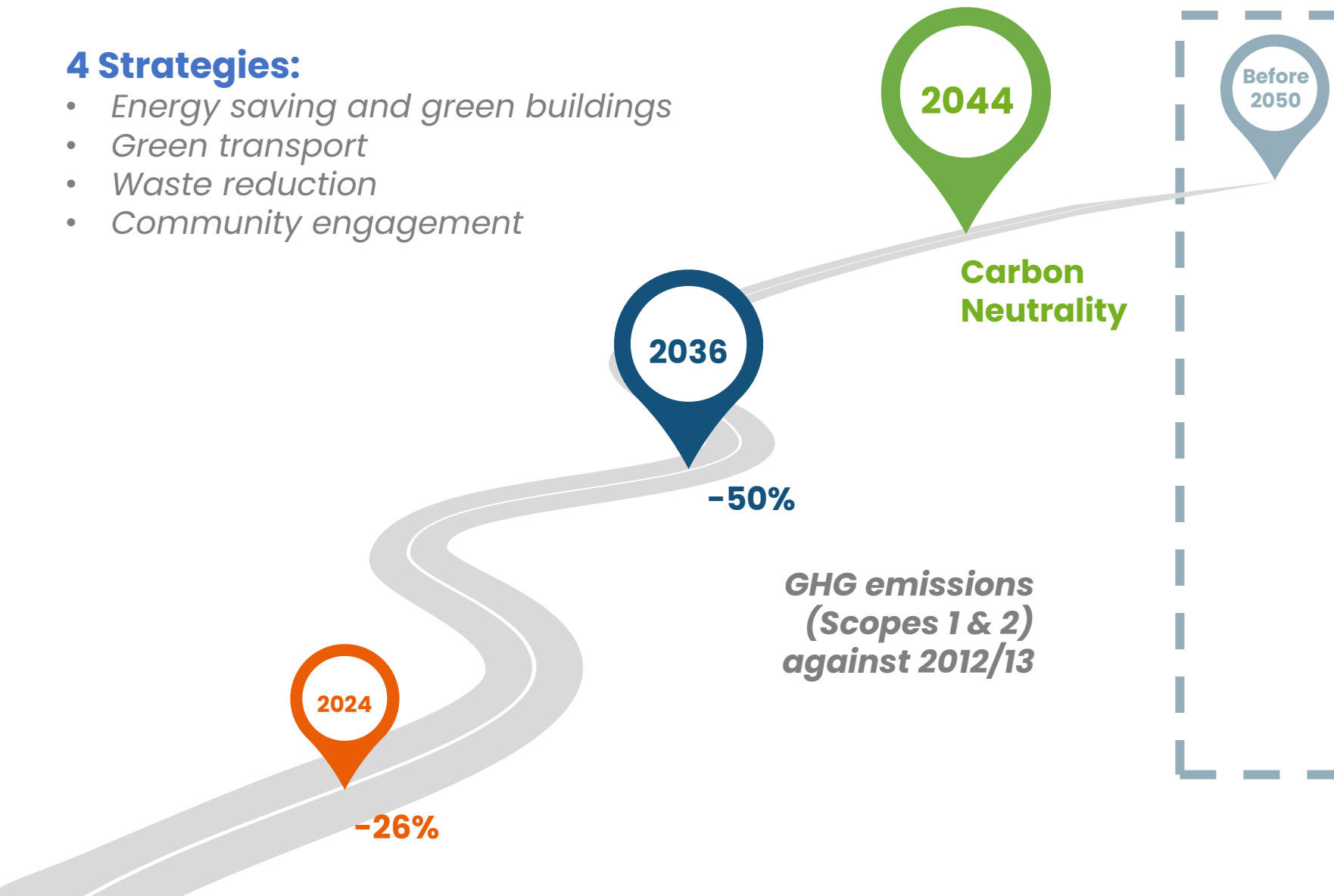
Taking responsibility

Encourage sustainability among students, staff,
and the community, fostering behavioral changes

Carbon Neutrality Roadmap

4 Strategies:

- Energy saving and green buildings
- Green transport
- Waste reduction
- Community engagement



October 2021

Carbon Neutrality in Hong Kong

Hong Kong's
CLIMATE ACTION PLAN 2050

Before 2035

↓ 50%

Total carbon emissions
Compared with 2005 level

Before 2050

香港邁向 **碳中和**
Carbon Neutral@HK

Energy Saving & Green Buildings



Green Transport



Waste Reduction



HKBU Community Engagement





Building a green U



Case sharing: Crop Science Laboratory



Finalist in Existing Buildings Category:
Completed Projects – Institutional



Building Green Culture

Case sharing: Crop Science Laboratory

1. Conservation of resources

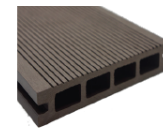
- Reuse building infrastructure



- Recycle system of Irrigation water



- Low-carbon materials



Extensive use of **recyclable material**, eg. WPC (Wood Plastic Composite) as outdoor decking.



Zero VOC Sealant and Paint
Paint with **low VOC** specified.

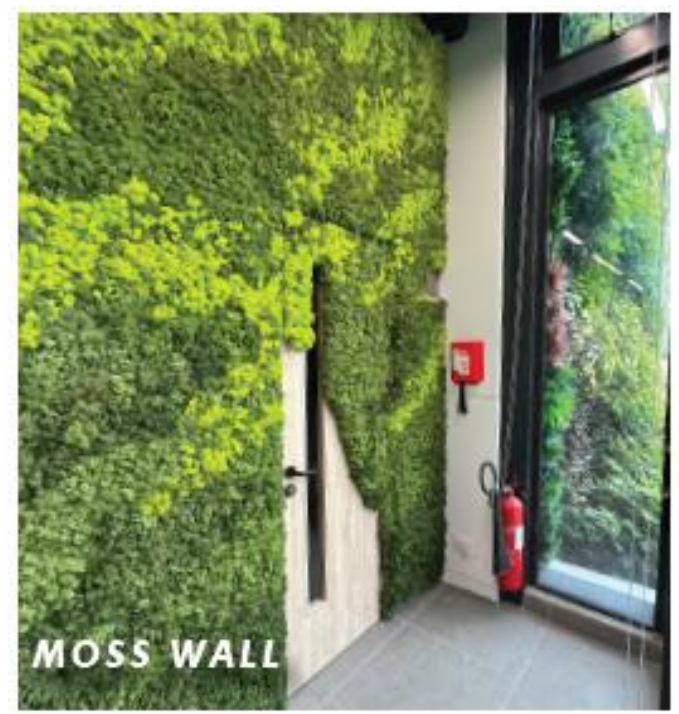


Low-embodied Carbon Materials used for major building components, such as concrete, bricks and timber

Building Green Culture

Case sharing: Crop Science Laboratory

2. Green spaces



Building Green Culture

Case sharing: Crop Science Laboratory

3. Smart lighting and thermal control

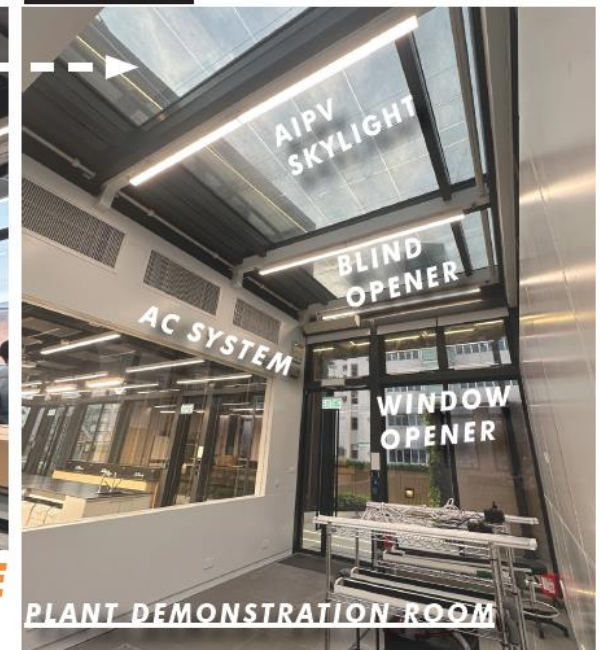


A PRECISE CONTROLLED LABORATORY

Building system integrated with smart system to create a **efficient and precise controlled space for research and education.**



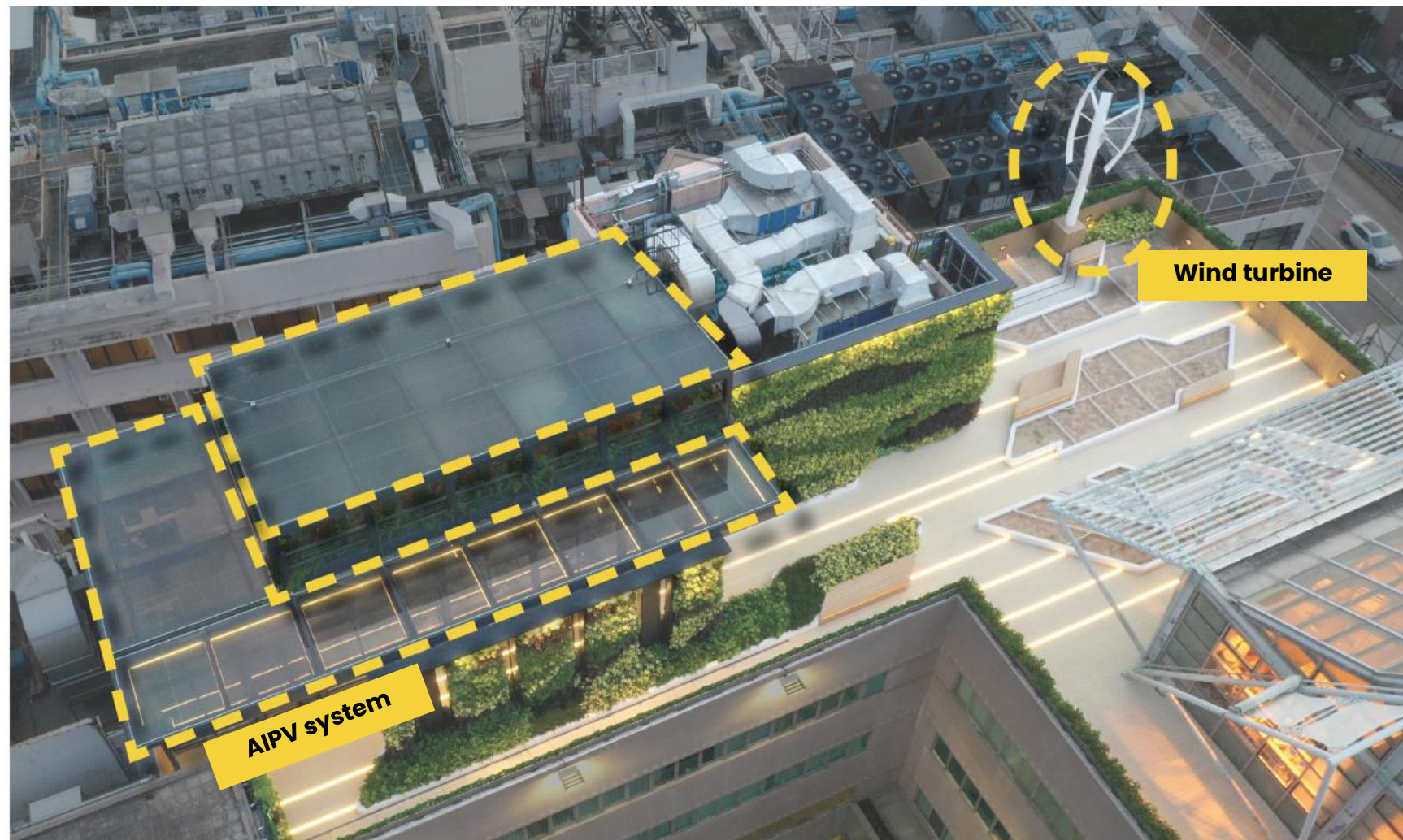
THE FIRST DOUBLE LAYER STRUCTURE RESEARCH LAB IN HONG KONG



Building Green Culture

Case sharing: Crop Science Laboratory

4. Renewable energy



Waste Minimisation Strategies

Reduction at source



Rethink



Refuse



Reduce



Reuse



Recycling



Repair

Materials reuse and recycling

6R's Principles

Reduction at Source



Lunchbox Lending Programme

Available on



Jockey Club
Sustainable Campus
Consumer Programme
賽馬會 | 綠·源·園



1. SELECT
2. TAP
3. GRAB

REDUCE
RETHINK
REVITALISE

BORROW A LUNCHBOX HERE

SAY NO TO DISPOSABLE CONTAINERS

8 Campuses

YOU USE, WE WASH!

FREE

Borrowing 借

5/F, AAB (near Main Canteen)
AAB 5樓 (近浸會大學道校園餐廳)



- 1) Select the container that you are lending.
選擇借用容器。
- 2) Tap your Octopus card to pay the \$20 deposit.
拍八達通卡支付20元按金。
- 3) Grab your reusable lunchbox and enjoy your meal!
拿出你的飯盒，享受無廢外賣！

Returning 還

3/F, AAB (near escalator)
AAB 3樓 (近扶手電梯)



- 1) Remove food waste and close the lid.
清除食物殘渣和蓋上蓋子。
- 2) Tap your Octopus card.
拍下八達通卡。
- 3) Put the food container back into the machine, and follow the steps.
將食品容器放回機器中，然後按指示完成步驟。
- 4) Tap your Octopus again to collect \$20 refund.
再拍八達通取回\$20按金。









Other Waste Reduction Measures



Materials Reuse and Recycling



Challenge #1: Limited space on Kowloon Tong Campus (5.41 ha)



Challenge #2: Scattered Locations for recycling

HO SIN HANG CAMPUS (HSHC) 善衡校園

1 Au Shue Hung Building 區樹洪樓	2 Sing Tao Building 星島樓	3 Christian Education Centre (CEC) and University Chapel 基督教教育中心暨大學禮拜堂
4 Academic Community Hall (ACH) 大學會堂	5 Lui Ming Choi Centre (LMC) 呂明才中心	6 Oen Hall Building (OEE, OEM & OEW) 溫仁才大樓
7 Cha Chi-ming Science Tower (SCT) 查濟民科學大樓	8 Yeung Shui Sang Building (YSS) 楊瑞生紀念館	9 Fong Shu Chuen Library (FSC) 方樹泉圖書館
10 Sir Run Run Shaw Building (RRS) 邵逸夫大樓	11 Wai Hang Sports Centre (WHS) 偉衡體育中心	

SHAW CAMPUS (SC) 逸夫校園

1 Shaw Tower (SWT) 逸夫行政樓	2 Au Shue Hung Memorial Library (AML) 區樹洪紀念圖書館	3 The Wing Lung Bank Building for Business Studies (WLB) 永隆銀行應學大樓	4 Lam Woo International Conference Centre 林護國際會議中心
5 David C. Lam Building (DLB) 思賢樓	6 Joint Sports Centre (JSC) 聯校運動中心	7 Madam Kwok Chung Bo Fun Sports and Cultural Centre (SCC) 郭鍾貴女士康體文娛中心	

Baptist University Road Campus (BURC) 浸會大學道校園

1 Dr. Ng Tor Tai International House (NTI) 吳多泰博士國際中心	2 Academic and Administration Building 教學及行政大樓	3 Jockey Club Academic Community Centre (JCACC) / Madam Chan Wu Wan Kwai School of Continuing Education Tower (SCE) 賽馬會師生活動中心/陳瑞槐夫人胡尹桂女士持續教育大樓	4 Jockey Club School of Chinese Medicine Building (JCSCM) 賽馬會中醫藥學院大樓
5 Student Residence Halls (SRH) 學生宿舍	6 Communication and Visual Arts Building (CVA) 傳理視藝大樓		

	4 colored bins 四色回收箱	Paper, metals, plastics, general waste 廢紙、金屬、塑膠、一般垃圾		Brown bin 啡色桶	Plastic / Banner 塑膠/橫額
	3 colored bins 三色回收箱	Paper, metals, plastics 廢紙、金屬、塑膠		Blue bin 藍色桶	Florescent tubes, energy saving bulbs 光管及燈電膽
	3 stack recycling bin 三層回收箱	Rechargeable battery, CD, toner and ink cartridges 可充電電池、光碟、碳粉盒及噴墨盒		Cage 環保籠	Paper 廢紙
	Green bin 綠色桶	Glass 玻璃		Cage 環保籠	Waste electrical and electronic equipment (WEEE) 廢舊電器
	Zero Waste Zone	Paper, metals, plastics, glass, rechargeable battery, CD, toner and ink cartridges, banner, florescent tubes and energy saving bulbs, WEEE, polyfoam 廢紙、金屬、塑膠、玻璃、可充電電池、光碟、碳粉盒及噴墨盒、橫額、光管及燈電膽、廢舊電器、發泡膠		Cage 環保籠	Polyfoams 發泡膠
					The recycling stations locate at every lift lobby of all buildings 小型廢物回收箱設置於樓層的電梯大堂

Challenge #3: Inadequate recyclables types



Challenge #4: Lack of incentive



 香港浸會大學
HONG KONG BAPTIST UNIVERSITY

 低碳校園 你我共建
GO FOR A LOW CARBON CAMPUS

LET'S GO GREEN CORNER





Clothes
衣物

Clothes
衣物

Other paper
composites
其他紙類複合物

Cardboard
紙皮

Corrugated
cardboard
瓦楞紙

Other
paper
其他紙類

Plastic
plastic
塑膠

Other
plastic
其他塑膠

Other
metal
其他金屬

Other
metal
其他金屬

Other
metal
其他金屬

Other
metal
其他金屬

Other
metal
其他金屬

Other
metal
其他金屬

Other
metal
其他金屬

Other
metal
其他金屬

Other
metal
其他金屬



BEA 東亞銀行

24hr
自助理財

大學/大專學生專享服務
網上開戶 優惠存款 優惠貸款
3%優惠存款 優惠9折

BEA 東亞銀行
24小時自助理財
營業時間
星期一至五
上午九時至下午七時
星期六、日及假期
上午十時至下午六時

HKBU
Communication
HKBU

REWARD POINTS

2 Redeem points

3 Redeem gifts

GREEN CORNER

SMART RECYCLING BINS

Recycle

Reward

Redeem

Reduce

Reuse

Recycle

Plastic No. 2
2號塑膠

Other plastics (Plastic No. 4-7)
其他塑膠 (4-7 號塑膠)

Newspaper, books, magazines
報紙、書籍、雜誌

Copy paper
影印紙

Cardboard
紙皮

Other paper composites
其他紙類組合

Clothes
衣物

Clothes
衣物

LOW-CARBON CAMPUS

Reduce

Reuse

Recycle

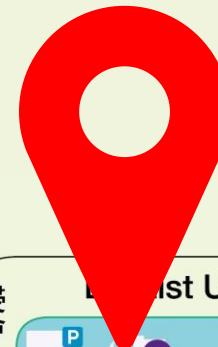


Books 'n Bites



FIRE HOSE REEL
消防喉卷盤

Green Corner



SHAW CAMPUS (SC)
逸夫校園

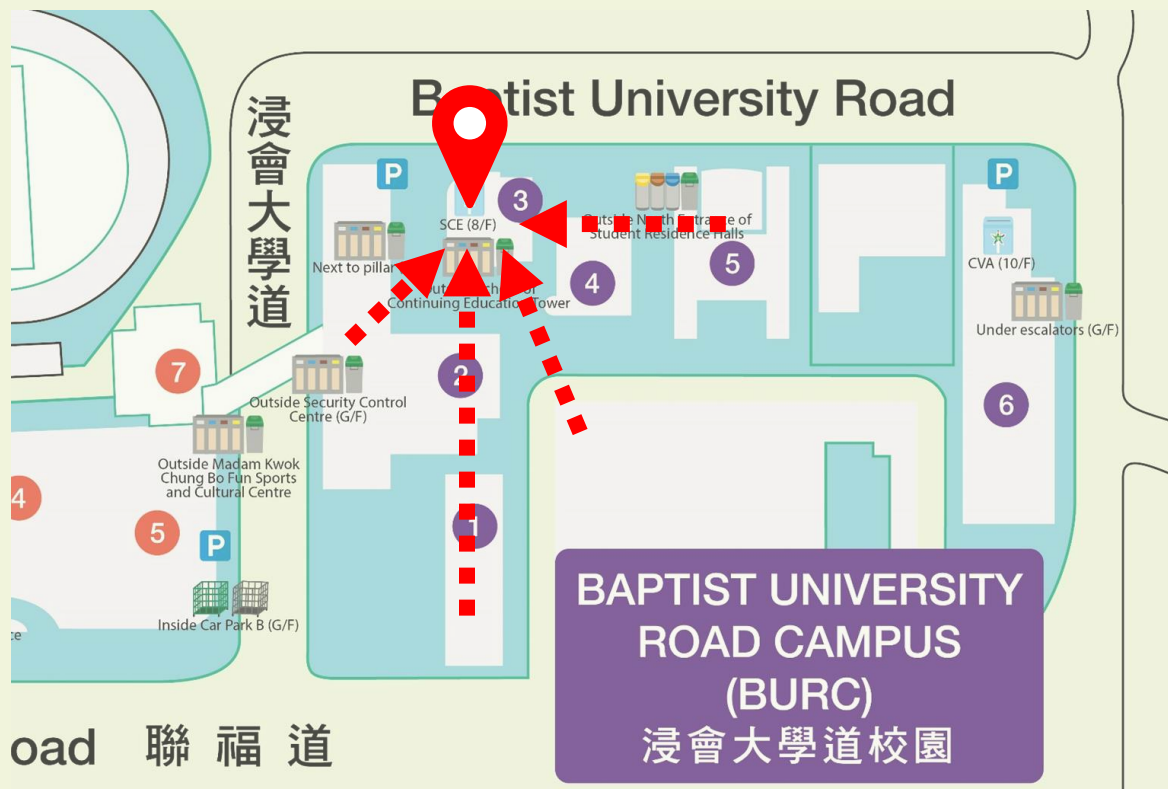
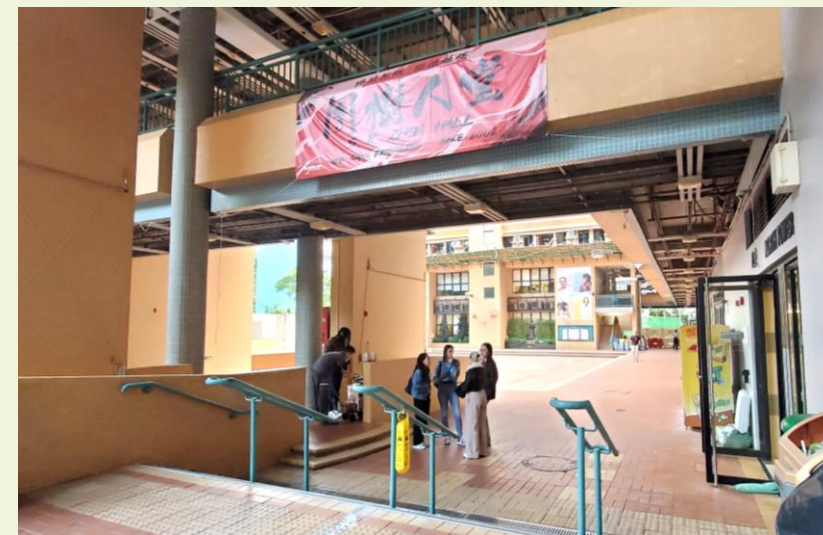
BAPTIST UNIVERSITY ROAD CAMPUS (BURC)
浸會大學道校園

HO SIN HANG CAMPUS (HSHC)
善衡校園



	4 colored bins 四色回收箱	Paper, metals, plastics, general waste 廢紙、金屬、塑膠、一般垃圾		Brown bin 啡色桶	Plastic / Banner 塑膠/橫額
	3 colored bins 三色回收箱	Paper, metals, plastics 廢紙、金屬、塑膠		Blue bin 藍色桶	Florescent tubes, energy saving bulbs 光管及慳電膽
	3 stack recycling bin 三層回收箱	Rechargeable battery, CD, toner and ink cartridges 可充電電池、光碟、碳粉盒及噴墨盒		Cage 環保籠	Paper 廢紙
	Green bin 綠色桶	Glass 玻璃		Cage 環保籠	Waste electrical and electronic equipment (WEEE) 廢舊電器
	Zero Waste Zone	Paper, metals, plastics, glass, rechargeable battery, CD, toner and ink cartridges, banner, florescent tubes and energy saving bulbs, WEEE, polyfoam 廢紙、金屬、塑膠、玻璃、可充電電池、光碟、碳粉盒及噴墨盒、橫額、光管及慳電膽、廢舊電器、發泡膠		Cage 環保籠	Polyfoams 發泡膠
<p>The recycling stations locate at every lift lobby of all buildings 小型廢物回收箱設置於樓層的電梯大堂</p>					

禧福道
Hereford Road





GRAND OPENING

GREEN CORNER SMART RECYCLING BINS

Get 3x reward pts! until 31 Dec

LOW-CARBON CAMPUS

Reduce Reuse Recycle

October 6

G/F, ACC/SCE (Near BU Market)

Onsite Promotion: Date: 6, 9-12 Oct 2023 Time: 2-4pm

物業處 ESTATES OFFICE

QR codes for Instagram and Website

GREEN CORNER CHINESE NEW YEAR'S GIVEAWAY

LOW-CARBON CAMPUS

Reduce Reuse Recycle

Get a Drink Coupon

October 19

October 20

2:00 PM - 4:00 PM

G/F ACC/SCE (Near BU Market)

QR codes for Instagram, Facebook, and Website










Grand Opening



Chinese New Year's Giveaway

Our President using the smart bins

Recyclables collected (Oct 23 - Jan 24)	Weight (kg)
 Plastic No. 2	24
 Other Plastics (Plastic No. 4 - 7)	44
 Newspaper, Books, Magazines	313
 Copy Paper	106
 Cardboard	57
 Other Paper Composites	47
 Clothes	181
Total Recyclables Collected: 772 kg	



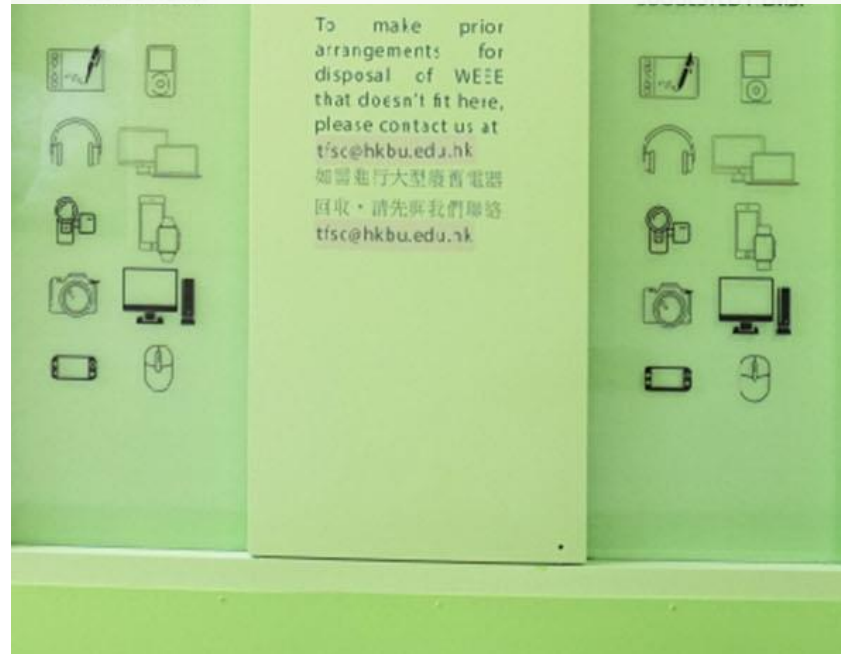


BU Coins





Other Recycling Facilities



Reduction at source



Rethink



Refuse



Reduce



Reuse



Recycling



Repair

Materials reuse and recycling

Education and engagement

Monitoring and Evaluation

Sharing and Guided Tours for students and community



Staff Sharing and Training



Publicity



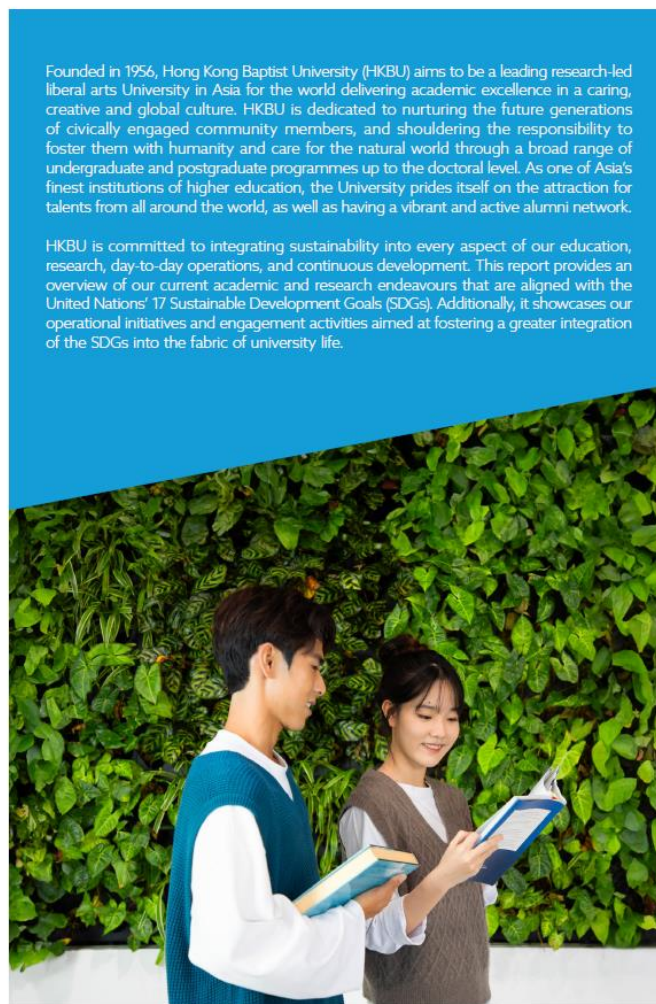
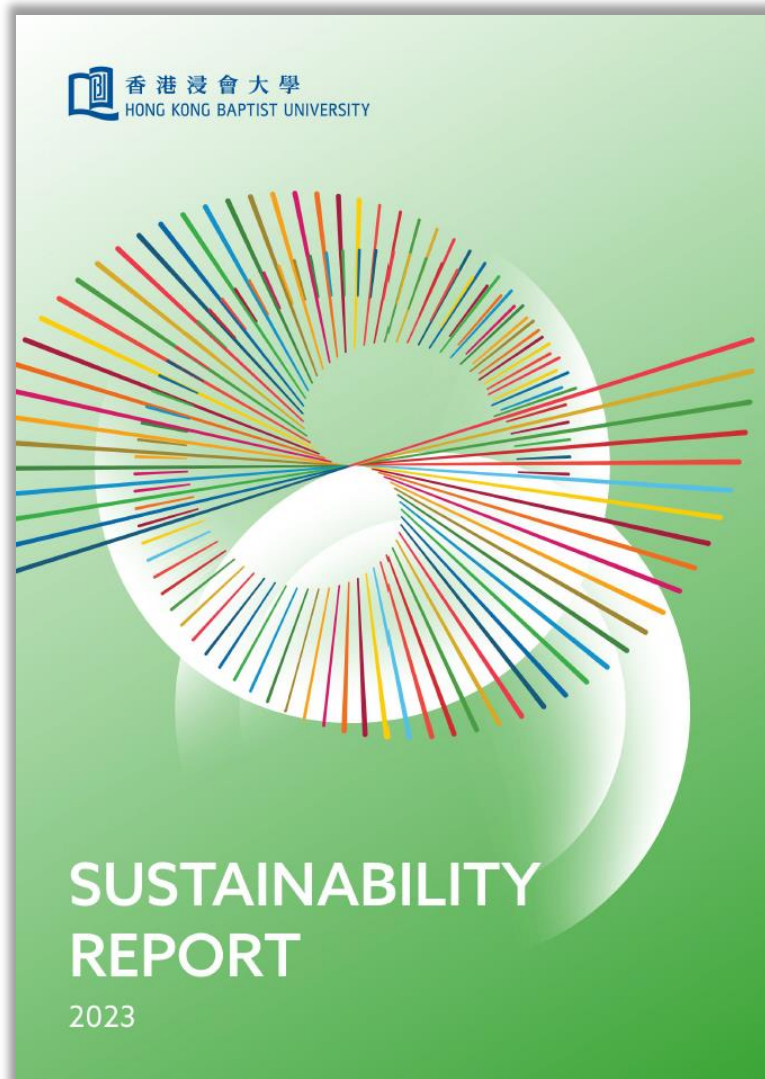
Follow us



Become a Fan



Visit us online



Founded in 1956, Hong Kong Baptist University (HKBU) aims to be a leading research-led liberal arts University in Asia for the world delivering academic excellence in a caring, creative and global culture. HKBU is dedicated to nurturing the future generations of civically engaged community members, and shouldering the responsibility to foster them with humanity and care for the natural world through a broad range of undergraduate and postgraduate programmes up to the doctoral level. As one of Asia's finest institutions of higher education, the University prides itself on the attraction for talents from all around the world, as well as having a vibrant and active alumni network.

HKBU is committed to integrating sustainability into every aspect of our education, research, day-to-day operations, and continuous development. This report provides an overview of our current academic and research endeavours that are aligned with the United Nations' 17 Sustainable Development Goals (SDGs). Additionally, it showcases our operational initiatives and engagement activities aimed at fostering a greater integration of the SDGs into the fabric of university life.

SUSTAINABLE DEVELOPMENT GOALS

Contents

SDG Mapping Approaches	4
SDG 01: No Poverty	5
SDG 02: Zero Hunger	8
SDG 03: Good Health and Well-being	13
SDG 04: Quality Education	24
SDG 05: Gender Equality	29
SDG 06: Clean Water and Sanitation	33
SDG 07: Affordable and Clean Energy	38
SDG 08: Decent Work and Economic Growth	46
SDG 09: Industry, Innovation and Infrastructure	51
SDG 10: Reduced Inequalities	56
SDG 11: Sustainable Cities and Communities	62
SDG 12: Responsible Consumption and Production	74
SDG 13: Climate Action	83
SDG 14: Life Below Water	89
SDG 15: Life On Land	94
SDG 16: Peace, Justice and Strong Institutions	97
SDG 17: Partnerships for the Goals	103
APPENDIX	107

Posters

15:06  Thursday
5 October, 2023

GRAND OPENING **GREEN CORNER SMART RECYCLING BINS** **Get 3x reward pts! until 31 Dec**

LOW-CARBON CAMPUS

October 6  **G/F, AGG/SCE (Near BU Market)**

1 Recycle Scan the barcode at the back of your student/staff ID card OR enter your ID manually and recycle!

2 Reward Earn Reward Points for putting in recyclables over 100g at a time.

3 Redeem Keep recycling to earn enough Reward Points for gift redemption! (Stay tuned!)

Facebook Instagram Website

Onsite Promotion: Date: 6, 9-12 Oct 2023 Time: 2-4pm **物業處 ESTATES OFFICE**

Low-carbon Campus - Estates Office

物業處 ESTATES OFFICE Rethink · Refuse · Recycle Reuse · Repair · Recycle HKBU Sustainability

SAVE PAPER

DO YOU KNOW?

> 2,200 tonnes of paper are dumped daily in Hong Kong \approx 140 buses by weight \approx 37,000 sheets of paper

Production of paper also consumes a large amount of water and may lead to water pollution!!

Let's **RETHINK, REFUSE & REDUCE** at source!

Reuse · Repair · Recycle

- ★ Save paper
- ★ Go digital
- ★ Use hand dryer
- ★ BYO handkerchief

Let's **REUSE · REFUSE · REDUCE**

60 EARTH HOUR WWF

地球一小時 EARTH HOUR 25.03.2023 20:30 生活態度 守護生態 Habits Protect Habits

Join us on Saturday, 25 March 2023 at 8:30 p.m.

Support Earth Hour 2023 Habits Protect Habits

As in previous years, the University will continue its support to the Earth Hour, a global climate campaign organised by the World Wide Fund for Nature. On 25 March 2023, the University will switch off all non-essential lighting and signboards on campus for an hour starting from 8:30 p.m. You are most welcome to do the same wherever you are to add on a little support to this meaningful event.

Small daily Habits leads to Big Changes!

- Lights Off: Reduce Unnecessary Energy Consumption
- Walk More, Save More
- Sustainable Fashion: Think Before you Spend
- Shorten Shower Time
- Low-Carbon Diet

Our Sustainability Performance in 2021/22 against 2017/18

- ↓ 6% Energy Consumption
- ↓ 14% Municipal Solid Waste Generation
- ↑ 60% Recyclables Collected
- ↓ 53% Paper Consumption

香港浸會大學 HONG KONG BAPTIST UNIVERSITY

NO STRAW ONCE AND FOR ALL

REALLY (!!!) IF YOU NEED ONE ... OR YOU MAY ... OR SIMPLY JUST ...

- PAY \$1 FOR ONE
- USE YOUR OWN REUSABLE SUBSTITUTES
- DRINK FROM THE CUP

衣衣不盡 Clothing Swap 我們需要你的二手衣物!!! Unwanted Clothes Wanted!!!

推廣二手衣物再用，所收集的衣物將於稍後的聯校交換活動免費發放。To promote reuse of second-hand clothes, collected clothing will be distributed for free at the later cross-university clothing swap event.

我們接受: We Accept:

- 清潔整理後，仍可穿戴使用的衣物、背包和手袋
- Clean clothes and bags that are like new or gently worn
- 女士、男士、童裝衣物如外衣、外褲、裙、背心、外套、西裝等
- Women's, men's and children's clothing, e.g. outerwear, pants, dresses, vests, coats, suits etc.

我們不接受: We Do Not Accept:

- 破損不潔的衣物
- Stained or damaged clothing
- 制服、圍裙衫、鞋襪、內衣等貼身衣物
- Uniforms, soc tee, shoes & socks, undergarments

NO

我們只接收乾淨衣物 We Only Want Your Clean Clothes

- 請先把衣物洗乾淨及簡單打包再放入回收桶
- Wash and pack your clothing items before donating
- 不要把非衣物類物品放進此箱
- Please do not put non-clothing items into this box

Sustainability Achievements / Membership / Charters



NEW BUILDINGS CATEGORY
PROJECTS UNDER CONSTRUCTION
AND/OR DESIGN
INSTITUTIONAL



The Development of Jockey Club Campus of Creativity
at 30 Renfrew Road, Kowloon Tong



Join us in working towards a sustainable future





Thank You